



Bear Amigurumi CROCHET DOLL

<i>Craft</i>	<i>Skill Level</i>	<i>Yarn Weight</i>
Crochet	Easy	Worsted (4)

SUPPLIES

[Size E \(3.5mm\) Hook](#)
[Removable stitch marker](#)
[Yarn needle to weave in ends](#)
[Scissors](#)
[Fiberfill/Stuffing](#)
[3-4 Metal Washers](#)
[\(1 inch - 1 1/4 inch\) - optional](#)

YARN & YARDAGE

[WeCrochet Wool of the Andes Worsted](#)

100% Peruvian Highland Wool, 110 yds/50g

Colorways:

Oyster Heather / Beige (1 skein, 50 yds)

Grizzly Heather/Brown (1 skein, 50 yds)

White (1 skein, 1 yd)

[WeCrochet Twill Fingering](#)

100% Fine Superwash Merino Wool, Fingering
Weight, 183 yds/50g

Colorway: Graphite Heather (1 ball, small
amount for eyes). Or embroidery thread.

[WeCrochet Aloft](#), 72% Superkid Mohair, 28%
Silk, 260 yds/25g, Lace Weight
Colorway: Mongoose

GAUGE

18 sts x 20 rows = 4x4 inches in sc

MEASUREMENTS:

Approx 6 inches tall and 3 inches wide

ABBREVIATIONS

blo - back loop only

ch - chain

flo - front loop only

[MC - Magic Circle](#)

rnd- round

sc - single crochet

[sc2tog - single crochet 2 together, see below for invisible
decrease tip.](#)

sl st - slip stitch

st(s) - stitch(es)

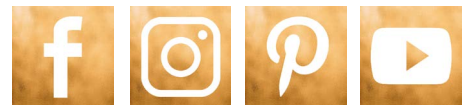
NOTES

Since this is worked continuously, a ch 1 at the beginning
of the round is not needed. It is helpful to place a stitch
marker on the first stitch of each round.

VIDEO TUTORIAL

For a similar ami video tutorial visit:

<https://youtu.be/oabVxYpE6MY>



Say Yes
To New
Adventures.



MORE ABOUT THIS PATTERN

The body of the crochet doll is worked from top-down, with the arms crocheted after and stitched to the body. The hat is made as a separate piece and placed on the doll's head with the ears stitched to each side. Using different colors can create a brown bear or a panda bear.

The colorways for this pattern are written as:

Oyster Heather or Camel Heather Yarn - Color A

Black Yarn - Color B

White Yarn held together with lace white yarn - Color C

Graphite Heather - Color D

Special Stitches:

Cross stitch single crochet: this variation of a crochet stitch works the stitch tighter and creates an 'X' on the front of the stitch. To work a single crochet stitch this way, insert your hook into the stitch, **yarn under**, pull up a loop, yarn over, pull through both loops on the hook. This way of working the single crochet stitch is used for the hat and the body.

Magic Circle: Start by creating a loop with your yarn. The tail of the working yarn will be over the working end. Insert your hook into the loop from behind. Yarn over and pull through the loop. Ch 1, Work all of your indicated stitches into the loop. Pull the tail end of your yarn to close the loop. Pull firmly to fasten the loop closed, this end will be weaved in and fastened off.

sc2tog invisible decrease: Insert your hook into the flo of the next stitch, insert your hook into the flo of the next stitch, yarn over, pull up a loop, yarn over and complete stitch.

Head Of The Bear

Rnd 1: Starting with the MC & with Color A, sc 6, do not join and work continuously. *6 sts*

Rnd 2: 2 sc in each st around. *12 sts*

Rnd 3: *2sc in first, sc in next st*; repeat from * to * around. *18 sts*

Rnd 4: *2sc in first, sc in next 2 sts*; repeat from * to * around. *24 sts*

Rnd 5: *2sc in first, sc in next 3 sts*; repeat from * to * around. *30 sts*

Rnd 6: *2sc in first, sc in next 4 sts*; repeat from * to * around. *36 sts*

Rnds 7-14: sc in each st around. *36 sts*

Rnd 15: *sc2tog, sc in the next 4 sts*; repeat from * to * around. *30 sts*

Rnd 16: *sc2tog, sc in the next 3 sts*; repeat from * to * around. *24 sts*

Rnd 17: *sc2tog, sc in the next 2 sts*; repeat from * to * around. *18 sts*

Rnd 18: sc in each st around, begin stuffing with fiberfill as you go, fasten off Color A. *18 sts*

Rnd 19: With Color B, working in the blo for this rnd, sc in each st around. *18 sts*

Rnd 20: *2sc in first, sc in next 8 sts*; repeat from * to * around. *20 sts*

Rnd 21: sc in each st around. *20 sts*

Rnd 22: *2sc in first, sc in next 4 sts*; repeat from * to * around. *24 sts*

Rnd 23: sc in each st around. *24 sts*



Rnd 24: *2sc in first, sc in next 5 sts*; repeat from * to * around. 28 sts

Rnds 25-29: sc in each st around. 28 sts

Rnd 30: Working in the blo for this round, *sc2tog, sc in next 2 sts*; repeat from * to * around, fasten off Color B. 21 sts

Rnd 31: With Color A, working in the flo for this rnd, sc in each st around. 21 sts

Rnd 32: Working in the blo for this rnd, *sc2tog, sc in next*; repeat from * to * around, **place washers in the bottom for weight.** 14 sts

Rnd 33: sc2tog around, fasten off leaving a tail, using the tail end weave through the flo of remaining sts and pull closed, weave in end and fasten off. 7 sts

Arms of Bear (Make 2)

Rnd 1: Starting with the MC & with Color A, sc 6, do not join and work continuously. 6 sts

Rnd 2: *2sc in first, sc in next 2 sts*; repeat from * to * around, fasten off Color A. 8 sts

Rnds 3-4: With Color B, sc in each st around. 8 sts

Rnd 5: sc2tog, sc in remaining sts around. 7 sts

Rnd 6: sc2tog, sc in remaining sts around, fasten off leaving a tail, and sew arms to each side of the body on rnd 20. 6 sts

Bear Hat

Rnd 1: Starting with the MC & with Color C, sc 6, do not join and work continuously. 6 st

Rnd 2: 2 sc in each st around. 12 sts

Rnd 3: *2sc in first, sc in next st*; repeat from * to * around. 18 sts

Rnd 4: *2sc in first, sc in next 2 sts*; repeat from * to * around. 24 sts

Rnd 5: *2sc in first, sc in next 3 sts*; repeat from * to * around. 30 sts

Rnd 6: *2sc in first, sc in next 4 sts*; repeat from * to * around. 36 sts

Rnds 7-13: sc in each st around. 36 sts

Rnd 14: Working in the blo for this rnd, sc in each st around, fasten off and do an invisible finish, weave in ends. 36 sts

Ears Of Bear (Make 2)

Rnd 1: Starting with the MC & with Color B, sc 6, do not join and work continuously. 6 sts

Rnd 2: 2 sc in each st around. 12 sts

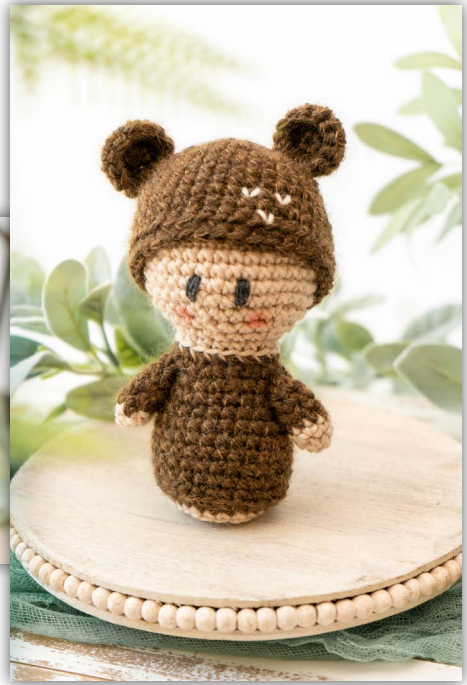
Rnd 3: sc in each st around, fasten off leaving a long tail, stitch ears to each side of hat on rnds 5-7. 12 sts



FINISHING & DETAILS

With Color D, stitch eyes on the front of the Bear doll's face on rnds 11-12. If shading is desired for the cheeks, use either make-up or pastels and a small brush and paint the powder onto the face of the doll. Use black yarn to stitch on 'V' lines on hat if desired. Weave in all ends and enjoy.

Thank you for sharing your creations on social media; I love seeing them! Tag #brianakdesigns or @brianakdesigns



More About Briana K Designs

Hello, my fellow crafters!

I feel we are all natural-born artists nourishing our talents throughout our entire lives.

I've been fortunate enough to have found a home in the fiber arts community where my passions for crochet, knit, and cross stitch can grow.

I'm a Florida girl for over a decade, but I lived in the Rocky Mountains for my childhood. A place where I understood the value of warm hats and mittens. While I love nature and hiking, I've grown extremely fond of the sunny beaches.

If you have made an item using one of my patterns I would love to see it! Simply use the tag **@brianakdesigns** or **#brianakdesigns**

Our [Facebook Community Group](#) is just the best, so come on over for crafty happiness.

Cheers!
Briana K



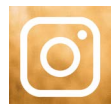
Don't Miss A Thing
Join The Newsletter



Connect With Me On Social



www.facebook.com/BrianaKDesigns



www.instagram.com/brianakdesigns/



www.pinterest.com/brianaKdesigns



<https://youtube.com/c/BrianaK>



www.ravelry.com/designers/briana-k-designs



www.etsy.com/shop/BrianaKdesigns



www.tiktok.com/@brianakdesigns



www.brianakdesigns.com

